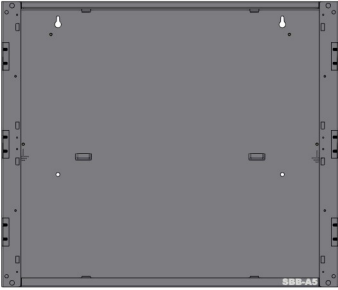


NOTIFIER INSPIRE™ N16x CONFIGURATION GUIDE

REV F
11/11/2024

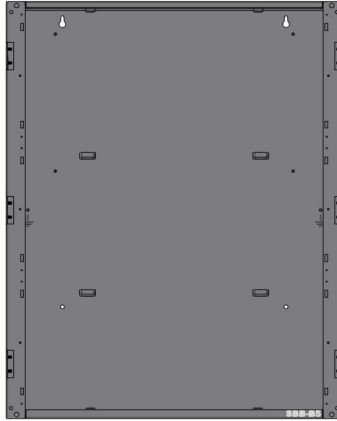
CAB-5 SERIES BACKBOX OPTIONS

SBB-A5



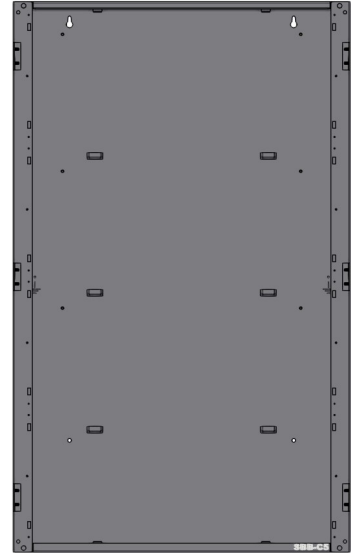
24"W x 20.31"H x 5.5"D

SBB-B5



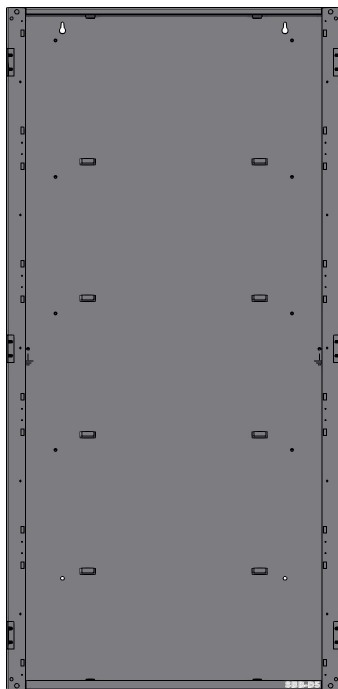
24"W x 29.88"H x 5.5"D

SBB-C5



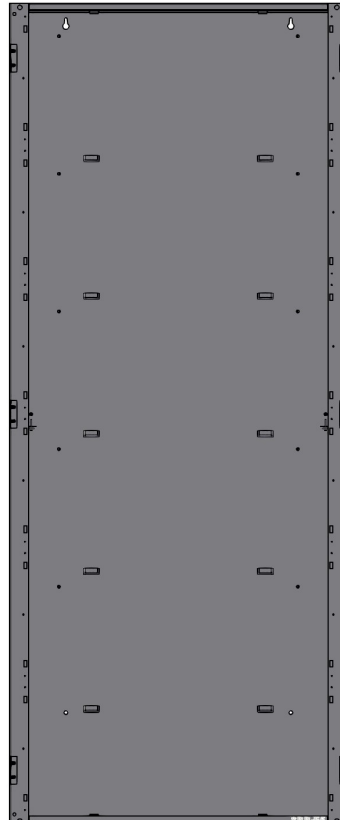
24"W x 34.44"H x 5.5"D

SBB-D5



24"W x 49"H x 5.5"D

SBB-E5



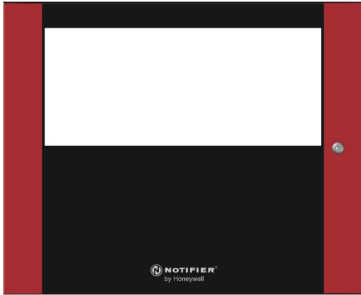
24"W x 58.56"H x 5.5"D

CAB-5 SERIES DOOR OPTIONS

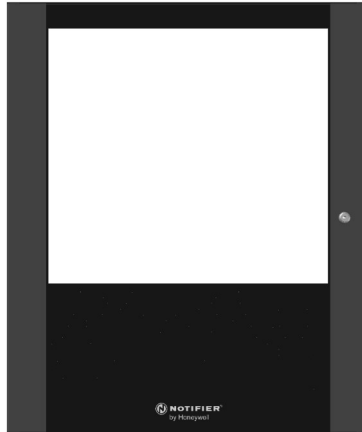
("B" after any part number below will result in a solid "blank" door)

DR-A5

Shown with Optional DTR-A5 Trim

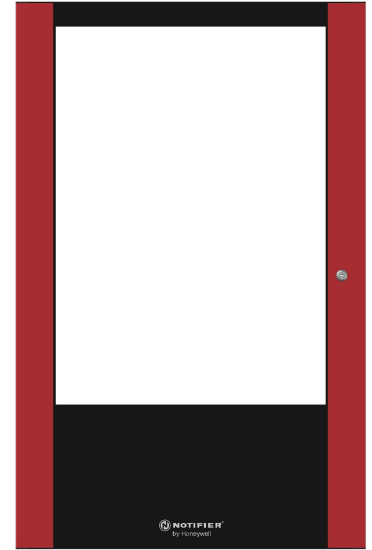


DR-B5

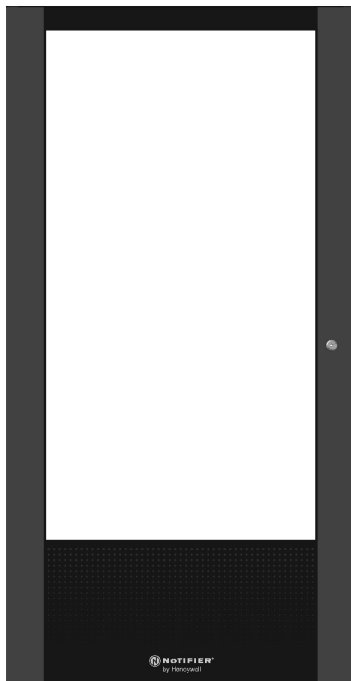


DR-C5

Shown with Optional DTR-C5 Trim

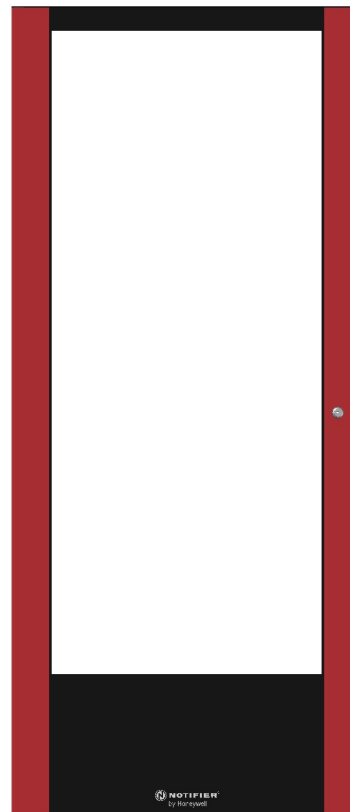


DR-D5



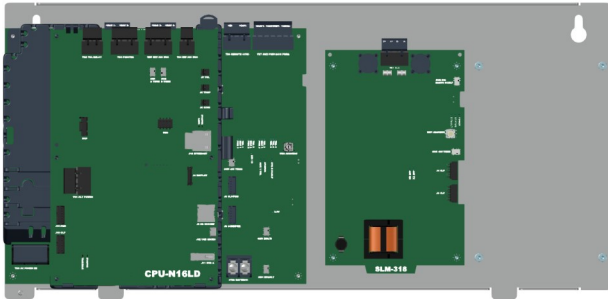
DR-E5

Shown with Optional DTR-E5 Trim



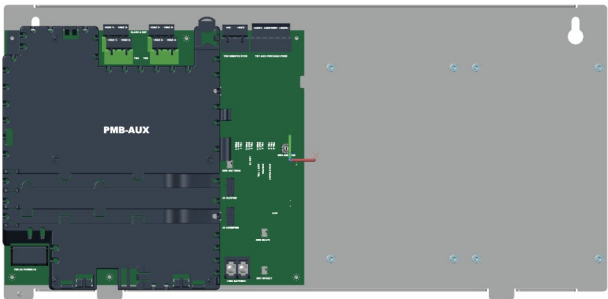
Note: All doors shown hinged left but may be hinged right flipping the trim and lock.

CAB-5 SERIES CABINET CHASSIS



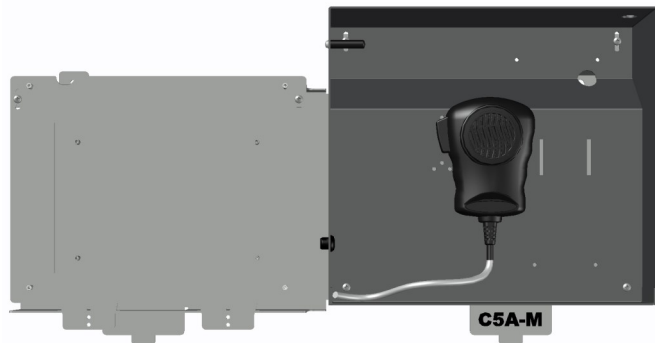
CPU-N16LND/CPU-N16LD

Includes Inspire Panel Core, CAB-5 Chassis, Power Supply, and SLM-318 Card
Chassis supports up to 6 Cards (2 wide x 3 deep)
* CPU-N16LD includes the 10" display (not shown)



PMB-AUX

Includes CAB-5 Chassis and Power Supply
Chassis supports up to 6 Cards (2 wide x 3 deep)



C5A-M

Includes CAB-5 Audio Chassis, Audio Well and Microphone
Chassis supports DVC and up to 2 Cards (Limited Access)
Audio Well supports optional TELH-1 Telephone (DVC-EM and DVC-KDB ordered separately)
Mounts in Rows 1, 2, or 3 (adjustable for Rows 1 or 3)



C5A-NW

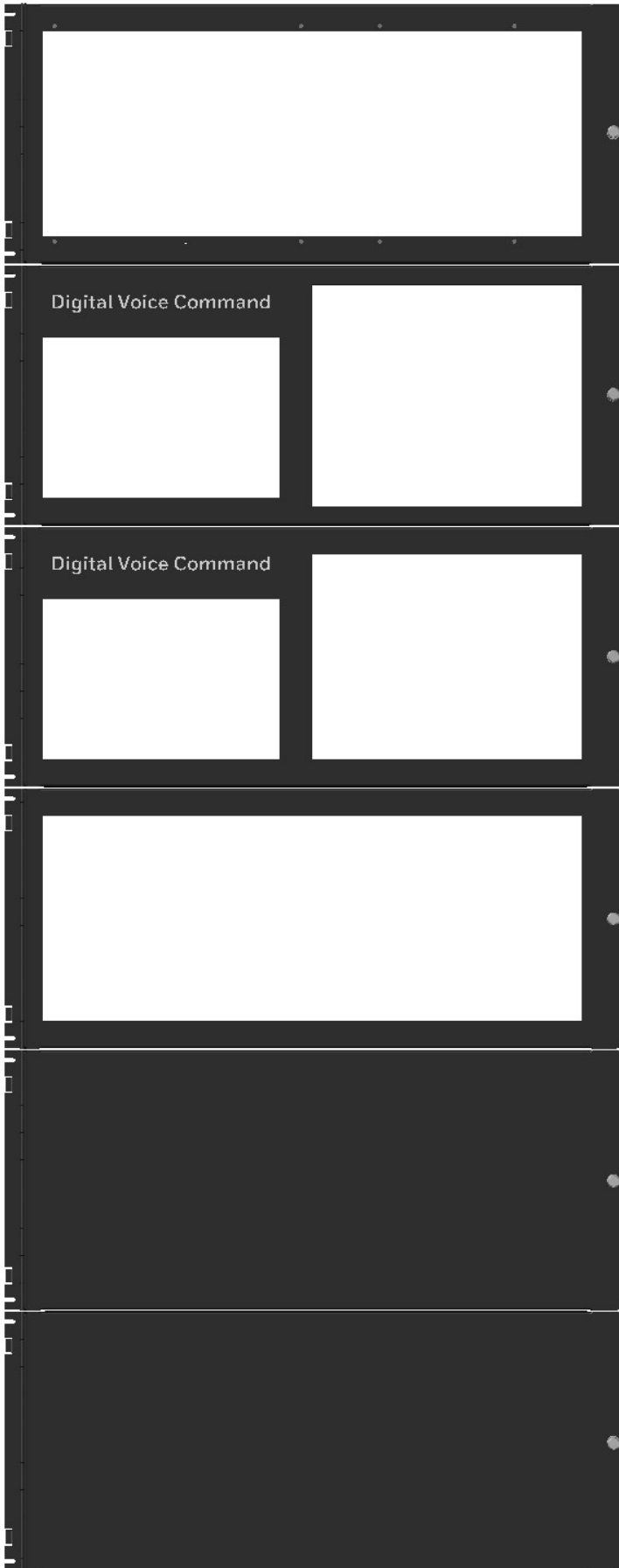
CAB-5 Audio Chassis Only
Chassis mounts DVC and up to 2 Cards (DVC-EM and DVC-KDB must be ordered separately)
Mounts in Rows 1, 2, or 3 (adjustable for Rows 1 or 3)



CHS-ADP

CAB-5 Adaptor for mounting CAB-4 series chassis or equipment (i.e. CHS-4L, CHS-6, etc.)

CAB-5 SERIES DRESS PANELS



DP-T2A

Mounts 10" Display with 2 ACM-30 Locations
(or ABP-1 Blank Covers)

DPA-C5

Used to Cover C5A-M

DPA-2A5

Used with C5A-NW with 2 ACM-30 Locations
(or ABP-1 Annunciator Blank Covers)

DP-4A

Mounts 4 ACM-30 Annunciators
(or ABP-1 Annunciator Blank Covers)

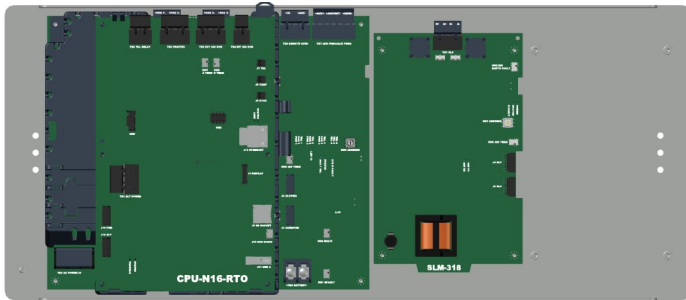
DP-BLN

Blank Dress Panel

BP-5

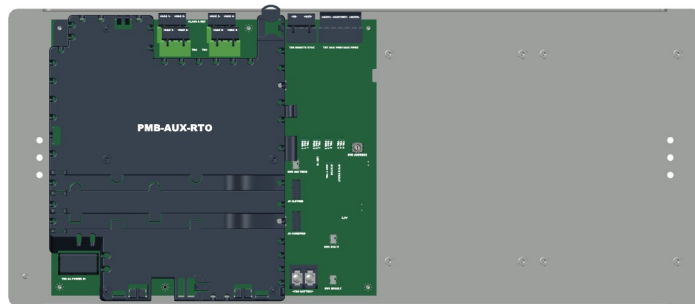
Covers Bottom Section of CAB-5 Enclosures

CAB-4 SERIES RETROFIT CHASSIS



CPU-N16-RTO

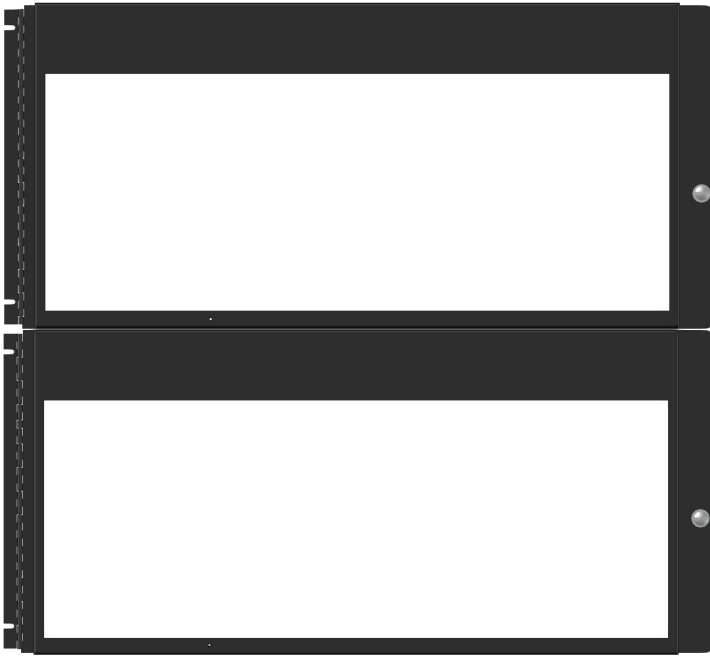
Includes Inspire Panel Core, CAB-4 Chassis, Power Supply, 10" Display and SLM-318 Card
Chassis supports up to 6 Cards (2 wide x 3 deep)
(Display not shown)



PMB-AUX-RTO

Includes CAB-4 Chassis and Power Supply
Chassis supports up to 6 Cards (2 wide x 3 deep)

CAB-4 SERIES RETROFIT DRESS PANELS

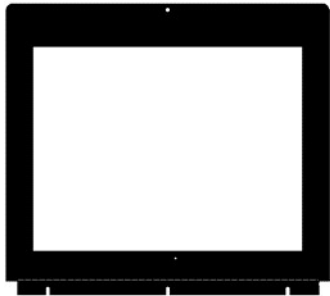


DP-T2A-CB4

Mounts 10" Display with 2 ACM-30 Locations
(or ABP-1 Annunciator Blank Covers)

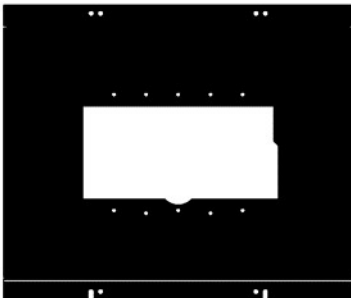
DP-4A-CB4

Mounts 4 ACM-30 Annunciators
(or ABP-1 Annunciator Blank Covers)



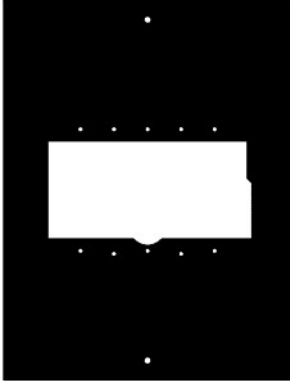
DP-NCD-2D

Inner Dress Plate to mount the NCD in an ABS-2D, replacing the NCA-2. Reuse the backbox and door of ABS-2D



DP-ADP

Adapter plate to mount the RLD in an ABS-2D or a CAB4 enclosure, replacing an LCD-160. Reuse the backbox, door and dress panel of the ABS-2D



RLD-1DB-RTO

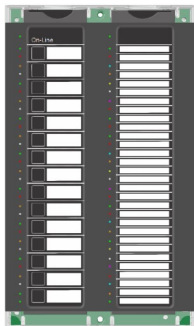
Adapter Plate to mount the RLD in ABF-1DB, replacing LCD2-80. Reuse the backbox and discard the door of the ABF-1DB



ACM-1DB-RTO

Adapter plate to mount an ACM-30 in ABF-1DB, replacing ACM-24AT or ACM48A. Reuse the backbox and the door of the ABF-1DB

NOTIFIER INSPIRE ANNUNCIATOR MODULE



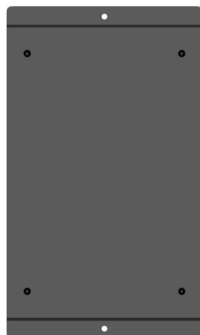
ACM-30

Provides 30 programmable capacitive-touch control points and 60 mappable multi-colored LEDs.
80 AIO Devices per CPU, 10 Router Addresses, 15 Peripherals per Router

Options

Order **AIO-CBL** (includes four 6" and one 48" ribbon cable) when connecting peripherals

* Only DP-T2A-CB4 or DP-4A-CB4 retrofit dress panels are supported for CAB-4 Series.

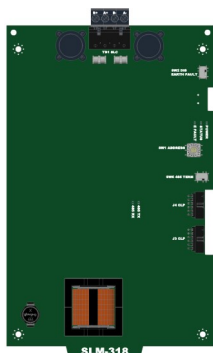


ABP-1

Covers unused ACM-30 position
Provides mounting options for cards (limited).

* Only DP-T2A or DP-4A-CB4 retrofit dress panels are supported for CAB-4 Series.

NOTIFIER INSPIRE SLC MODULE

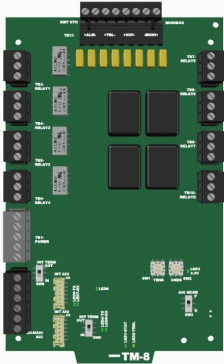


SLM-318

Provides SLC Communications to Inspire Series panels for up to 159 Detectors and 159 Modules via Flashscan protocol.

Up to 10 SLM-318 cards may be on a N16 Panel. More than 5 SLM-318 cards requires a PMB-AUX.
CLIP protocol may be activated via a panel license.

NOTIFIER INSPIRE AIO BUS MODULE

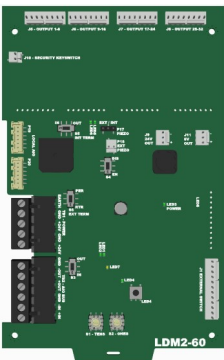


TM-8

Provides 3 reverse polarity contacts for Alarm, Trouble, and Supervisory or a Municipal Tie connection. Also provides 8 programmable form-C relays (4 x 2A and 4 x 10A ratings)
80 AIO Devices per CPU, 10 Router Addresses, 15 Peripherals per Router

Options

Order **AIO-CBL** (includes four 6" and one 48" ribbon cable) when connecting peripherals

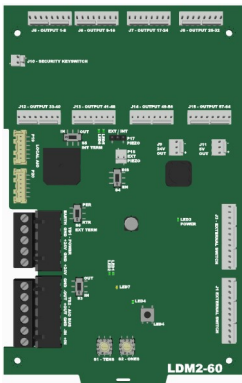


LDM2-32

Provides 32 LED drivers and 10 switch inputs (one input predefined to be lamp test)
Ideal for retrofit applications where matching pinouts are required.
80 AIO Devices per CPU, 10 Router Addresses, 15 Peripherals per Router

Options

Order **AIO-CBL** (includes four 6" and one 48" ribbon cable) when connecting peripherals



LDM2-60

Provides 64 LED drivers and 21 switch inputs (one input predefined to be lamp test)

Ideal for new projects.

80 AIO Devices per CPU, 10 Router Addresses, 15 Peripherals per Router

Options

Order **AIO-CBL** (includes four 6" and one 48" ribbon cable) when connecting peripherals

NOTIFIER INSPIRE CLSS GATEWAY



HON-CGW-MBB

CLSS Gateway in surface-mount plastic enclosure (required for wireless/cellular communications)

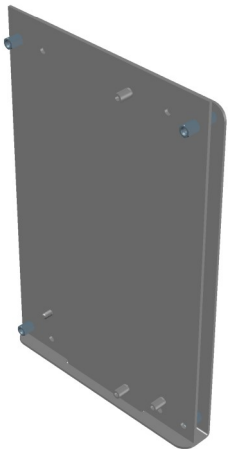
Options

50160636-001: 30" NUP Cable and Notifier lock and key set

32351718-001: 10' NUP Cable

CCM-ATT-HON: AT&T Cellular Communication Module

CCM-VZ-HON: Verizon Cellular Communication Module



CHS-CGW

Use CHS-CGW for mounting the gateway on the CPU-N16 or PMB-AUX chassis only*

* For wired sole-path IP communication only

Note: Wireless/cellular communication is NOT supported within metal enclosures.

Order the HON-CGW-MBB separately and remove the gateway from the plastic enclosure.

Must be mounted in the far right position of CPU-N16 or PMB-AUX chassis and does not support cards stacked in front. If the gateway is in the 3rd card position, do not mount ACM-30 in front on dress panel.



HON-DACT-DS

POTS Dialer, surface-mount plastic enclosure. Supports dual telephone line communication to central receiving station using Ademco® Contact ID communication format

Options

50160636-001: 30" NUP Cable and Notifier lock and key set

32351718-001: 10' NUP Cable

MCBL-7. DACT phone cord, 7 ft (2.13 m)

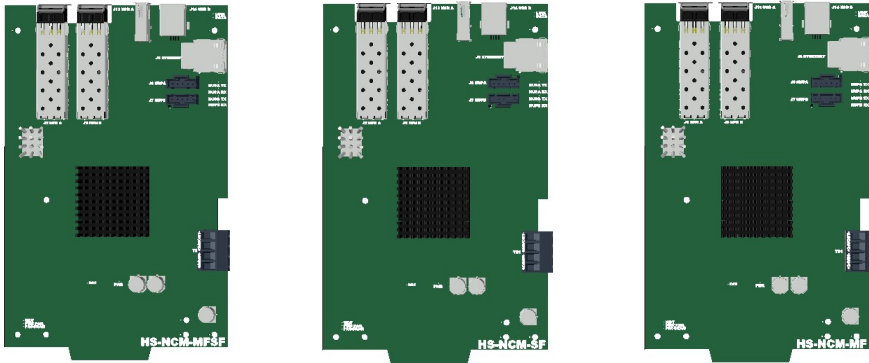
CGW-DACT-CH

Use CGW-DACT-CH for mounting the DS Dialer on the CPU-N16 or PMB-AUX chassis

Order the HON-DACT-DS separately and remove the cards from the plastic enclosure.

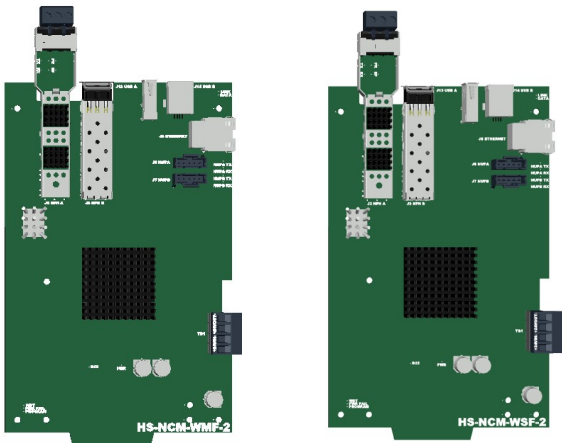
Must be mounted in the far right position of CPU-N16 or PMB-AUX chassis and does not support cards stacked in front. The dialer assembly occupies 2 positions in the stack and it can be mounted on top of **ONE** loop card and still have an ACM-30 mounted on the dress panel.

HIGH-SPEED NETWORK CARDS



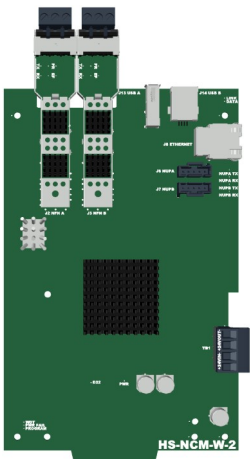
HS-NCM-MFSF / HS-NCM-SF / HS-NCM-MF

HS-NCM-MFSF provides one Multi-Mode **LC port** and one Single-Mode fiber **LC port** for High-Speed network communication.
HS-NCM-SF provides two Single-Mode fiber **LC ports** for High-Speed network communication.
HS-NCM-MF provides two Multi-Mode fiber **LC ports** for High-Speed network communication.
Each HS-NCM card allows for connection to up to 2 network nodes via NUP connectors.



HS-NCM-WMF-2 / HS-NCM-WSF-2

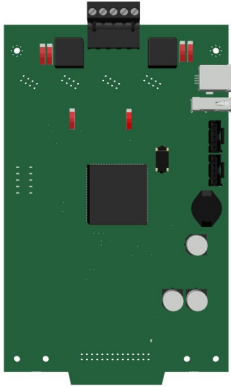
HS-NCM-WMF-2 provides one Multi-Mode fiber **LC port** and one wired port for High-Speed network communication.
HS-NCM-WSF-2 provides one Single-Mode fiber **LC port** and one wired port for High-Speed network communication.
Each HS-NCM card allows for connection to up to 2 network nodes via NUP connectors.



HS-NCM-W-2

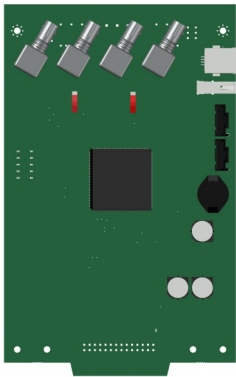
HS-NCM-W-2 provides two wired **LC ports** for High-Speed network communication.
Each HS-NCM card allows for connection to up to 2 network nodes via NUP connectors.

STANDARD SPEED NETWORK CARDS



NCM-W

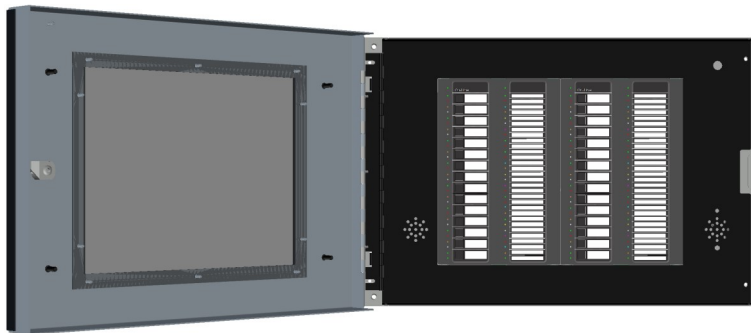
NCM-W provides two wired ports for Standard-Speed network communications. Each NCM-W card allows for connection to 1 network node via one NUP connector.



NCM-F

NCM-F provides two Multi-Mode Fiber [ST ports](#) (Tx and Rx for each port) for Standard-Speed network communications. Each NCM-F card allows for connection to 1 network node via one NUP connector.

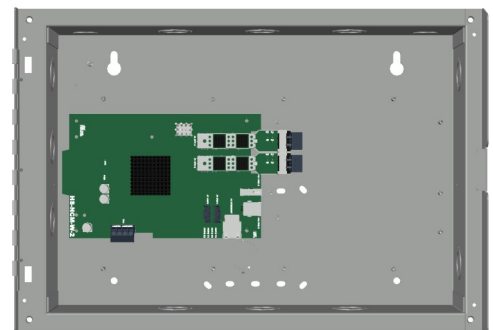
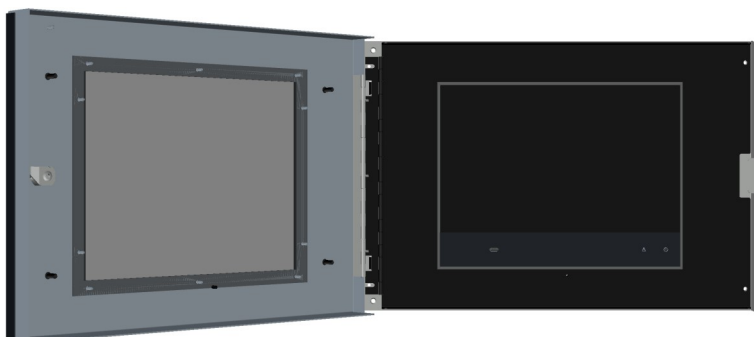
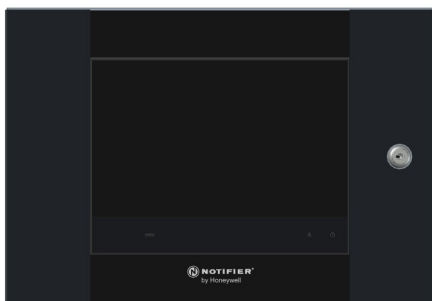
NOTIFIER INSPIRE DUAL ANNUNCIATOR DISPLAY CABINET (ABB-2)



Backbox support mounting a single High-Speed Network Card or two standard Network cards

NOTIFIER INSPIRE NCD CABINET (NBB-2)

Remote ABB-2 Enclosure shown with a NCD Display and a High-Speed Network Card (ordered separately)



Interior View
(Shown with HS-NCM-W-2)

Backbox support mounting a single High-Speed Network Card or two standard Network cards

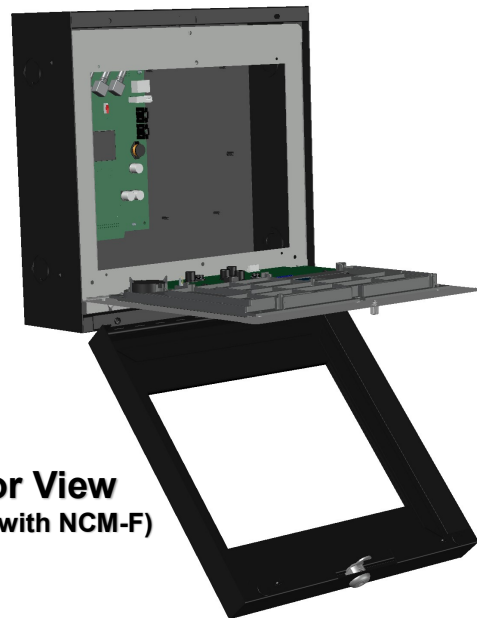
NOTIFIER INSPIRE SINGLE ANNUNCIATOR DISPLAY CABINET (ABB-1)



Backbox support mounting a single standard Network

ONYX REMOTE NCD CABINET (ABS-TD)

Remote ONYX NCD Enclosure shown with NCD display and Standard NCM-F Card (ordered separately)



Backbox support mounting a single Standard Network card only in the left position

Interior View
(Shown with NCM-F)

NOTIFIER INSPIRE REMOTE LOCATION DISPLAY (RLD)



Connects to panel AIO bus as a Router

Mounts on a 3 GANG back box

NOTIFIER INSPIRE PANEL AND NCD LICENSABLE FEATURES

Starting with Version 6.0 of the N16 firmware, N16E/R and CPU-N16LD, CPU-N16LND, CPU-N16-RTO panels will be shipped from the factory with an N16E persona. The functionality of the N16E persona and N16X persona is as described below. The panel capability can be expanded to an N16X persona at any time by adding a one time N16e to N16x upgrade license

N16e Persona Enables	N16x Persona Enables
Support for up to three loops	Support for up to ten loops
Support for one PMB	Support for up to 3 PMBs
Agent Releasing zone, 0 in base offering, multiples of 10, max 10 zones	Agent Releasing zone, 0 in base offering, multiples of 10, max 50 zones
Water Releasing zone, 0 in base offering, multiples of 10, max 10 zones	Water Releasing zone, 0 in base offering, multiples of 10, max 100 zones
Support two additional nodes without a network display license. Network display license can be added for the panel to act as a network display	Support two additional nodes without a network display license. Network display license can be added for the panel to act as a network display
100 general zones base offering, increments of 50 or 250, max 2000	250 general zones base offering, increments of 50 or 250, max 2000
50 logic zones base offering, increments of 50 or 250, max 2000	250 logic zones base offering, increments of 50 or 250, max 2000

The NCD Network Display includes 250 Logic Zones and 8 Custom Action Buttons. The Logic zones can be expanded in multiples of 250 up to 2000 Logic Zones. Custom Action Buttons can be expanded in multiples of 8 up to 32.

The Overview of the base and maximum capability of each persona is described as below

INSPIRE SERIES				
Licensable Features per panel	N16E Persona		N16X Persona	
	Base	Maximum	Base	Maximum
Loops	3		10	
Number of Power Supplies	1		3	
General Zones	100	2000	250	2000
Logic Zones	50	2000	250	2000
Agent Releasing Zones	0	10	0	50
Water Releasing Zones	0	10	0	100
UZO- Universal Zone Coding	0	1	0	1
Network Display (hybrid Mode)	Up to 2 Nodes without license	Up to 200 nodes	Up to 2 Nodes without license	Up to 200 nodes
Custom Action Buttons	8	32	8	32
Clip Mode	0	1	0	1
NCD				
Licensable Features per NCD	Base		Maximum	
Logic Zones for NCD	250		2000	
Custom Action Buttons	8		32	

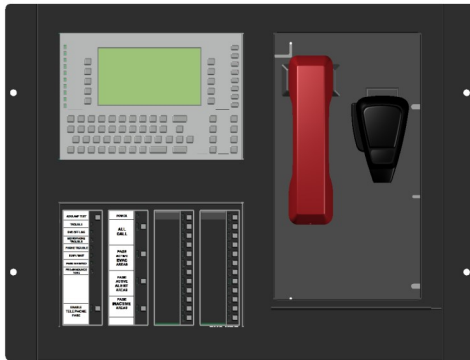
LICENSE SKU AND CLSS WEBSITE DISPLAY NAME

	License	Description	Orderable SKU on eCommerce/ Pricebook	CLSS Website Display name for license
PANEL LICENSES	N16e to N16x persona upgrade	Upgrade from N16e to N16x persona	N16-XUPG	N16X Upgrade Bundle
	Fire General / Logic Zone Expansion	Adds 250 General Zones	N16-GZN	General Zone Expansion 250
		Adds 250 Logic Zones	N16-LGZ	Logic Zone Expansion 250
		Adds 50 General Zones	N16-GZ50	General Zone Expansion 50
		Adds 50 Logic Zones	N16-LGZ50	Logic Zone Expansion 50
	Releasing Zone Expansion	Adds First 10 Agent Releasing Zones (Only 1 Per Panel)	N16-AREL	Releasing Zone Expansion
		Adds First 10 Water Releasing Zones (Only 1 Per Panel)	N16-WREL	Water Releasing Zone
		Adds Next 10 Agent Releasing Zones For An N16x Persona (Max 4 Per Panel)	N16-ADDAREL	Additional Releasing Zone Expansion
		Adds Next 10 Water Releasing Zones For An N16x Persona (Max 9 Per Panel)	N16-ADDWREL	Additional Water Zone Expansion
	UZC (Universal Zone Coding)	Adds Zone Coding capability in the panel	N16-UZC	UZC - Universal Zone Coding
Network Display	Allows the fire panel to act as a network display with full capabilities of an NCD	N16-NWD	Network Display Mode	
Custom Actions	Adds Next 8 Custom Action Buttons	N16-CAC	Custom Action Buttons	
CLIP Mode	Allows Panel To Support CLIP Protocol	N16-CLIP	Clip Mode	
NCD	Fire General/ Logic Zone Expansion	Adds 250 Logic Zones	NCD-LGZ	Logic Zone Expansion 250
	Custom Actions	Adds Next 8 Custom Action Buttons	NCD-CAC	Custom Action Buttons

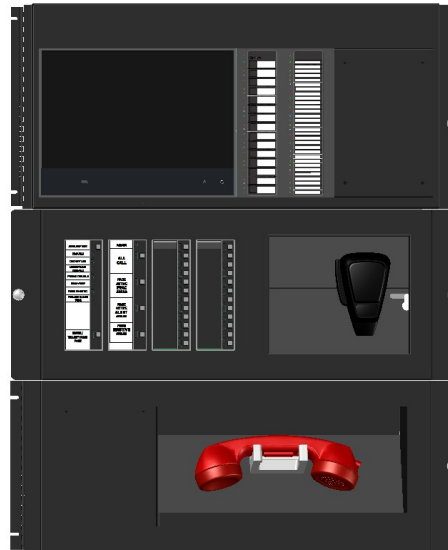
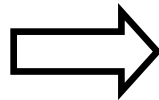
PAGE INTENTIONALLY LEFT BLANK

SPECIAL RETROFIT CONSIDERATION:

NFS2-3030 Voice retrofit where existing application includes CA-2 and DPA-2



EXISTING PANEL
(Rows 1 and 2 only)



INSPIRE Retrofit
(Requires 1 available Row)
Existing Equipment not shown



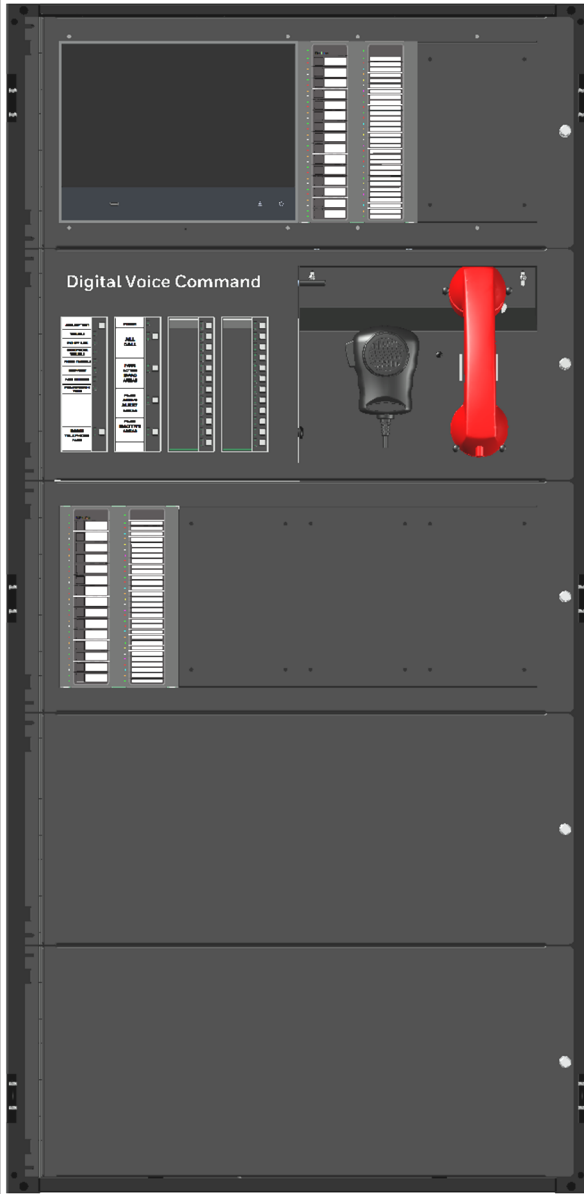
Option: Recommend removing fireman's phone system and install BDA emergency communication package.

QUANTITY	PART NO	DESCRIPTION
1	CA-1	CHASSIS, DVC, ONE ROW
1	CFFT-1	SINGLE NEW CHASSIS FOR MOUNTING FIREFIGHTER'S TELEPHONE. INCLUDES CFFT-1 CHASSIS, PHONE WELL, TELH-1 AND HARDWARE. ORDER DP-CFFT DRESS PLATE SEPARATELY
1	CMIC-1	CHASSIS WITH PAGING MICROPHONE WITH WELL; USED WITH CA-1
1	DPA-1	DRESS PLATE, DVC, ONE ROW
1	DP-CFFT	DRESS PLATE USED WITH CFFT-1
As Required	ABP-1	ANNUNCIATOR BLANK PLATE, FOR CAB-5
1	DP-T2A-CB4	DRESS PANEL; MOUNTS 10" TOUCHSCREEN DISPLAY AND 2 ACM-30 IN CAB-4
1	50160636-001	CLSS GATEWAY KIT. INCLUDES 30" NUP CABLE AND NOTIFIER LOCK AND KEY SET
Choose 1	CCM-ATT-HON	CLSS CELLULAR COMMUNICATION MODULE FOR ATT
	CCM-VZ-HON	CLSS CELLULAR COMMUNICATION MODULE FOR VERIZON
1	HON-CGW-MBB	CLSS GATEWAY, WITH ENCLOSURE (NOTIFIER LOCK AND CABLE KIT, 50160636-001 SOLD SEPARATELY)
As Required	ACM-30	INSPIRE SERIES ANNUNCIATOR CONTROL MODULE CONFIGURABLE FOR ACTIVATION AND INDICATION
1	CPU-16-RTO	CHASSIS MOUNT N16 INTELLIGENT FIRE ALARM CONTROL PANEL; 10" TOUCHSCREEN DISPLAY, CPU, UNIVERSAL AC INPUT POWER SUPPLY AND ONE SIGNALING LOOP MODULE (318 DEVICES) INCLUDED, EXPANDABLE TO 10. MOUNTS IN CAB-4. THE CPU IS SHIPPED WITH THE ABILITY TO SUPPORT UP TO 3 LOOPS, 1 POWER SUPPLY, 100 GENERAL ZONES, 50 LOGIC ZONES AND UPTO 2 ADDITIONAL NODES WITHOUT NETWORK DISPLAY LICENSE. THE CPU CAN BE UPGRADED TO AN N16X PERSONA THAT SUPPORTS UP TO 10 LOOPS, UP TO 3 POWERSUPPLIES, 250 GZ, 250LZ AND UPTO 2 ADDITIONAL NODES WITHOUT NETWORK DISPLAY LICENSE BY ADDING THE OPTIONAL LICENSE.
As Required	SLM-318	SIGNALING LOOP MODULE SUPPORTS 318 DEVICES PER LOOP MODULE.
If Required	N16-XUPG	UPGRADE LICENSE FROM N16E PERSONA PANEL OPERATION TO N16X PERSONA PANEL OPERATION

****BATTERY BOXES AND SYSTEM BATTERIES ARE NOT INCLUDED AND SHOULD BE SELECTED BASED ON CALCULATIONS**

Sample Configuration #1— NOTIFIER INSPIRE N16x VOICE

FACU With 7 SLC Loops, 1000 General Zones, 750 Logic Zones, 50 Watts of 70Vrms Speaker Power and Backup, Multimode Fiber Network, and CLSS cellular/wireless connectivity.



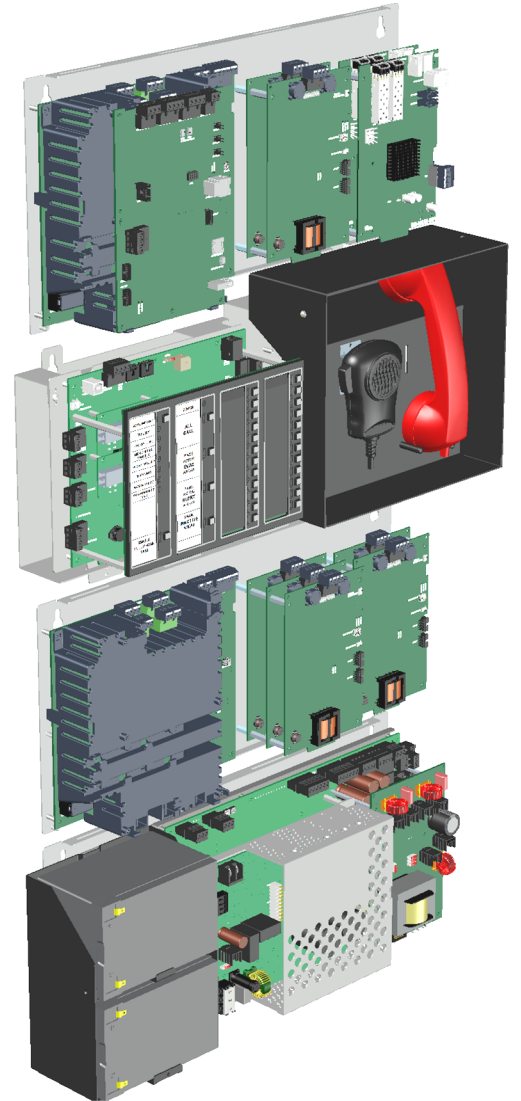
Dress Panel View
(DR-D5 Door not Shown)



TELH-1 is only required where Firefighter's telephones are Specified.

Consider Proposing BDA Emergency Communication Amplifier package where feasible

Note: When adding any equipment to this configuration, move the amplifier to a separate enclosure for proper heat dissipation.



Interior View

Sample Configuration #1—NOTIFIER INSPIRE N16x VOICE BOM

FACU With 7 SLC Loops, 1000 General Zones, 750 Logic Zones, 50 Watts of 70Vrms Speaker Power and Backup, Multimode Fiber Network, and CLSS cellular/wireless connectivity.

QUANTITY	PART NO	DESCRIPTION
1	SBB-D5	CAB-5 STANDARD BACK BOX SIZE D, FOUR ROW
1	DR-D5	D SIZE DOOR, LOCK & KEYS FOR CAB-5
1	DP-T2A	DRESS PANEL; 10" TOUCHSCREEN DISPLAY AND 2 ANNUNCIATORS FOR CAB-5
1	DPA-C5	DRESS PLATE FOR C5A-M; MICROPHONE AND TELEPHONE OPENING, FOR CAB-5
1	DP-4A	DRESS PANEL; MOUNTS 4 ACM-30 ANNUNCIATORS, FOR CAB-5
1	DP-BLN	DRESS PANEL BLANK; COVERS UNUSED CABINET ROW FOR CAB-5
1	BP-5	BATTERY DRESS PANEL FOR CAB-5 SERIES, CAB-5
2	ACM-30	INSPIRE SERIES ANNUNCIATOR CONTROL MODULE CONFIGURABLE FOR ACTIVATION AND INDICATION
4	ABP-1	ANNUNCIATOR BLANK PLATE, FOR CAB-5
2	HS-NCM-MF	HIGH-SPEED NETWORK COMMUNICATIONS MODULE, FIBER-OPTIC CABLE INTERFACE (MULTI-MODE).
6	SLM-318	SIGNALING LOOP MODULE SUPPORTS 318 DEVICES PER LOOP MODULE. <i>(1 SLM-318 is included with CPU-N16LD)</i>
1	CPU-N16LD	CHASSIS MOUNT N16 INTELLIGENT FIRE ALARM CONTROL PANEL; 10" TOUCHSCREEN DISPLAY, CPU, UNIVERSAL AC INPUT POWER SUPPLY AND ONE SIGNALING LOOP MODULE (318 DEVICES) INCLUDED, EXPANDABLE TO 10. MOUNTS IN CAB-5. THE CPU IS SHIPPED WITH THE ABILITY TO SUPPORT UP TO 3 LOOPS, 1 POWER SUPPLY, 100 GENERAL ZONES, 50 LOGIC ZONES AND UPTO 2 ADDITIONAL NODES WITHOUT NETWORK DISPLAY LICENSE. THE CPU CAN BE UPGRADED TO AN N16X PERSONA THAT SUPPORTS UP TO 10 LOOPS, UP TO 3 POWERSUPPLIES, 250 GZ, 250LZ AND
1	C5A-M	DVC CHASSIS, SINGLE ROW FOR MOUNTING DVC, MICROPHONE AND FIREFIGHTER'S TELEPHONE. INCLUDES: WELL, MIC-1 AND HARDWARE. ORDER TELH-1 SEPARATELY. FOR CAB-5
1	DVC-EM	DIGITAL VOICE COMMAND, EXTENDED MEMORY
2	DS-FM	CONVERTS ONE DAX OR DAA2 DAL PORT TO MULTI-MODE FIBER <i>(One installed on DVC and one installed on DAA2-5070)</i>
1	DVC-KDB	DIGITAL VOICE COMMAND, KEYPAD
1	TELH-1	FIREFIGHTER'S TELEPHONE HANDSET ONLY
1	PMB-AUX	AUXILIARY POWER SUPPLY, 6 AMPS, UNIVERSAL AC INPUT, ON CHASSIS FOR CAB-5
1	CHS-ADP	ADAPTER PLATE TO MOUNT CAB-4 CHASSIS IN CAB-5
1	DAA2-5070	DIGITAL AMPLIFIER 50W, 70V, 120 VAC
1	BDA-70V	BACK-UP DIGITAL AMPLIFIER FOR 70 VOLT DAX OR DAA2 SERIES
1	CHS-BH1	CHASSIS, 12AH BATTERY HOLDER, FOR USE WITH DAA- NUMBERS
1	BAT-12120-BP	FOUR (4) BAT-12120 BAT-12120 (12V, 12AH)
1	N16-XUPG	UPGRADE LICENSE FROM N16E PERSONA PANEL OPERATION TO N16X PERSONA PANEL OPERATION
3	N16-GZN	PANEL LICENSE - ADD 250 GENERAL ZONES FOR N16 PANEL [250 ZONES INCLUDED IN CPU. UP TO 2000 GENERAL ZONES PER CPU]
2	N16-LGZ	PANEL LICENSE - ADD 250 LOGIC ZONES FOR N16 PANEL [250 ZONES INCLUDED IN CPU, UP TO 2000 LOGIC ZONES PER CPU]
1	N16-NWD	PANEL LICENSE - ADD NETWORK DISPLAY MODE PANEL (REQ ONLY IF MAPPING MORE THAN 2 NODES TO PANEL)
1	50160636-001	CLSS GATEWAY KIT. INCLUDES 30" NUP CABLE AND NOTIFIER LOCK AND KEY SET
Choose 1	CCM-ATT-HON	CLSS CELLULAR COMMUNICATION MODULE FOR ATT
	CCM-VZ-HON	CLSS CELLULAR COMMUNICATION MODULE FOR VERIZON
1	HON-CGW-MBB	CLSS GATEWAY, WITH ENCLOSURE
1	32351718-001	10' NUP CABLE FOR CLSS GATEWAY

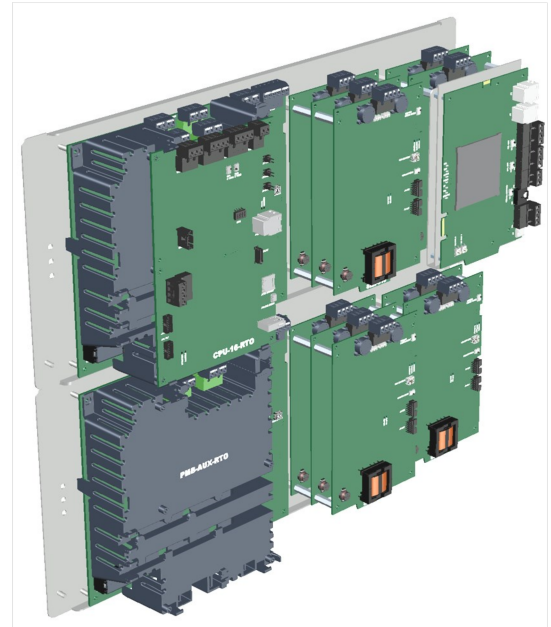
****BATTERY BOX AND SYSTEM BATTERIES ARE NOT INCLUDED AND SHOULD BE SELECTED BASED ON CALCULATIONS**

Sample Configuration #2—RETROFIT CAB4 TO NOTIFIER INSPIRE N16x

FACU With 10 SLC Loops, 500 General Zones, 250 Logic Zones, 16 Custom Action buttons, and Wired IP CLSS Connectivity.



Dress Panel View
(DR-D4 Door not Shown)



Interior View
(Existing Equipment not Shown)

Note: For jurisdictions where the AHJ mandates a current PPU Label to include the INSPIRE part numbers, order a new BP2-4.

Sample Configuration #2—RETROFIT TO NOTIFIER INSPIRE N16x BOM

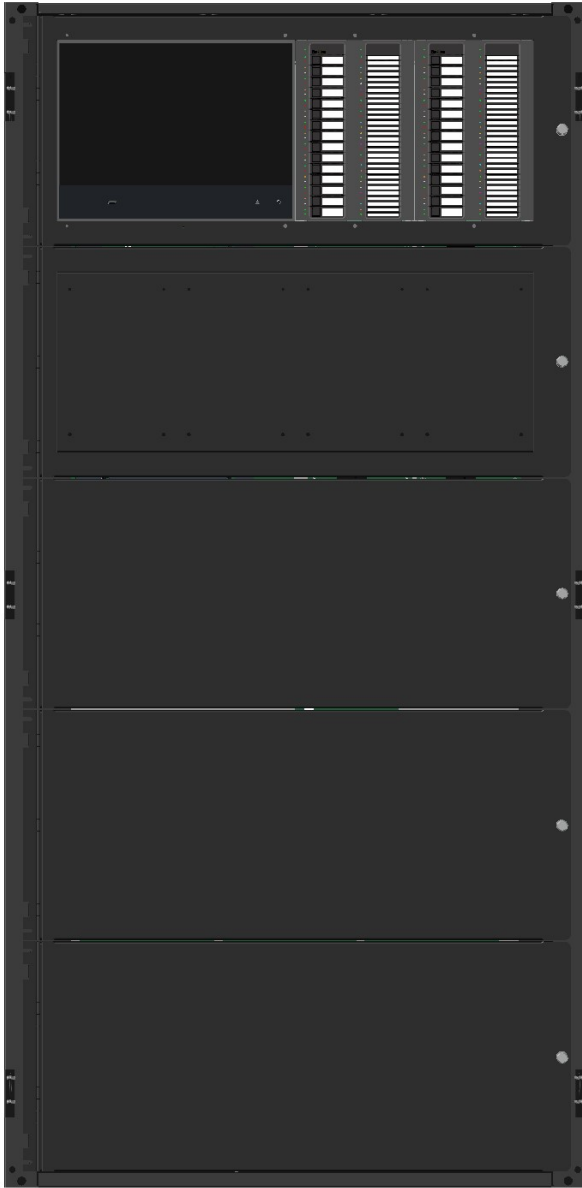
FACU With 10 SLC Loops, 500 General Zones, 250 Logic Zones, 16 Custom Action buttons, and Wired IP CLSS Connectivity.

QUANTITY	PART NO	DESCRIPTION
4	ACM-30	INSPIRE SERIES ANNUNCIATOR CONTROL MODULE CONFIGURABLE FOR ACTIVATION AND INDICA-
2	ABP-1	ANNUNCIATOR BLANK PLATE, FOR CAB-5
9	SLM-318	SIGNALING LOOP MODULE SUPPORTS 318 DEVICES PER LOOP MODULE.
1	N16-XUPG	UPGRADE LICENSE FROM N16E PERSONA PANEL OPERATION TO N16X PERSONA PANEL OPERA-
1	N16-CAC	PANEL LICENSE - ADD 8 CUSTOM ACTION BUTTONS FOR N16 (8 SOFT BUTTONS INCLUDED WITH CPU, UP TO 32 BUTTONS]
1	N16-GZN	PANEL LICENSE - ADD 250 GENERAL ZONES FOR N16 PANEL (250 ZONES INCLUDED IN CPU. UP TO 2000 GENERAL ZONES PER CPU]
1	CPU-16-RTO	CHASSIS MOUNT N16 INTELLIGENT FIRE ALARM CONTROL PANEL; 10" TOUCHSCREEN DISPLAY, CPU, UNIVERSAL AC INPUT POWER SUPPLY AND ONE SIGNALING LOOP MODULE (318 DEVICES) INCLUDED, EXPANDABLE TO 10. MOUNTS IN CAB-4. THE CPU IS SHIPPED WITH THE ABILITY TO SUPPORT UP TO 3 LOOPS, 1 POWER SUPPLY, 100 GENERAL ZONES, 50 LOGIC ZONES AND UPTO 2 ADDITONAL NODES WITHOUT NETWORK DISPLAY LICENSE. THE CPU CAN BE UPGRADED TO AN N16X PERSONA THAT SUPPORTS UP TO 10 LOOPS, UP TO 3 POWERSUPPLIES, 250 GZ, 250LZ AND UPTO 2 ADDITONAL NODES WITHOUT NETWORK DISPLAY LICENSE BY ADDING THE OPTIONAL LICENSE.
1	PMB-AUX-RTO	AUXILIARY POWER SUPPLY, 6 AMPS, UNIVERSAL AC INPUT, ON CHASSIS MOUNTS IN CAB-4
1	DP-T2A-CB4	DRESS PANEL; MOUNTS 10" TOUCHSCREEN DISPLAY AND 2 ACM-30 IN CAB-4
1	DP-4A-CB4	DRESS PANEL; MOUNTS 4 ACM-30 ANNUNCIATORS IN CAB-4
1	HON-CGW-MBB	CLSS GATEWAY, WITH ENCLOSURE (ENCLOSURE NOT USED IN THIS CONFIGURATION)
1	32351718-001	10' NUP CABLE FOR CLSS GATEWAY
1	CHS-CGW	HARDWARE FOR MOUNTING A CLSS GATEWAY ON THE CPU-N16 OR PMB CHASSIS. WIRELESS/ CELLULAR NOT SUPPORTED.

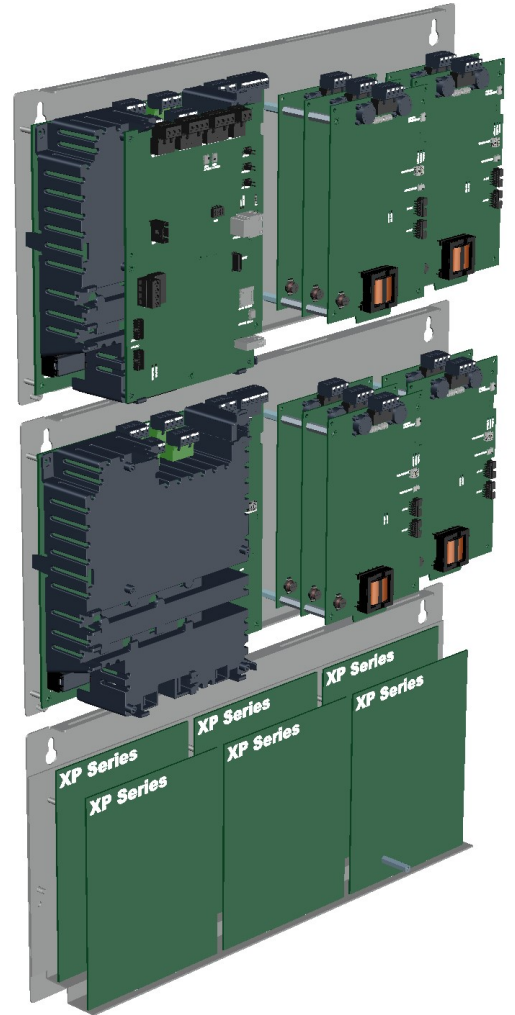
****BATTERY BOXES AND SYSTEM BATTERIES ARE NOT INCLUDED AND SHOULD BE SELECTED BASED ON CALCULATIONS**

Sample Configuration #3 — NOTIFIER INSPIRE N16x

FACU With 10 SLC Loops, 2000 General Zones, 2000 Logic Zones, High-Speed Wire Network, 4 XP6MA, 2 XP10-M, Additional Row



Dress Panel View
(DR-D5 Door not Shown)



CHS-ADP
CHS-6

Interior View

Sample Configuration #3 — NOTIFIER INSPIRE N16x BOM

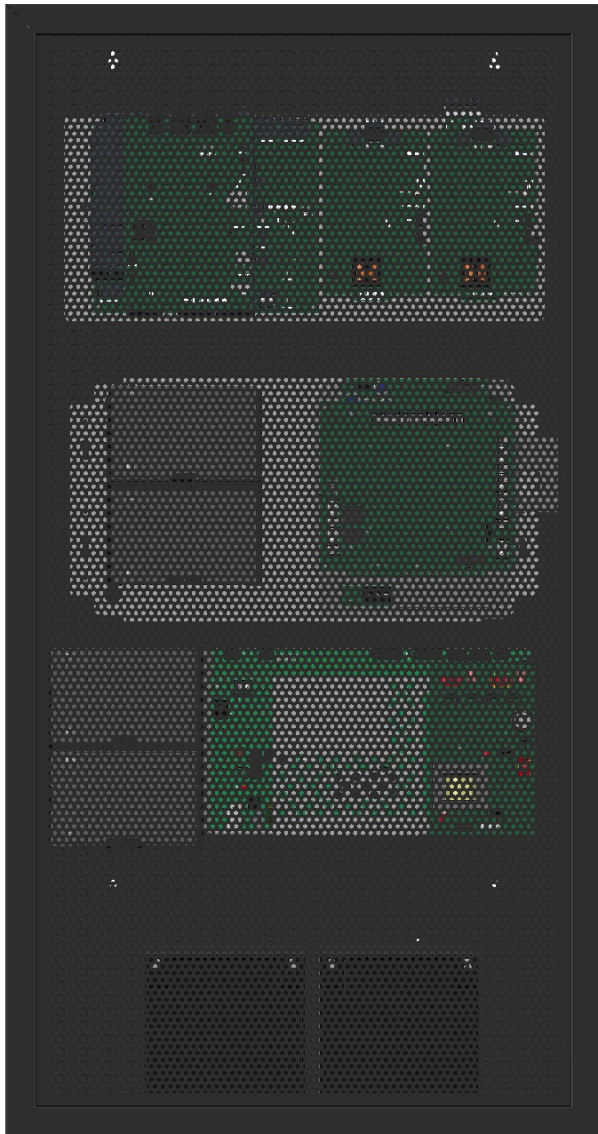
FACU With 10 SLC Loops, 2000 General Zones, 2000 Logic Zones, High-Speed Wire Network, 4 XP6MA, 2 XP10-M, Additional Row

QUANTITY	PART NO	DESCRIPTION
4	ABP-1	ANNUNCIATOR BLANK PLATE, FOR CAB-5
1	BP-5	BATTERY DRESS PANEL FOR CAB-5 SERIES, CAB-5
1	CHS-6	CHASSIS, MOUNTS UP TO 6 XP-6 MODULES IN A BB-25 OR A ROW OF THE CAB-3/4 SERIES CABINET; ALSO MOUNTS ACPS-610.
1	CHS-ADP	ADAPTER PLATE TO MOUNT CAB-4 CHASSIS IN CAB-5
1	DP-4A	DRESS PANEL; MOUNTS 4 ACM-30 ANNUNCIATORS, FOR CAB-5
2	DP-BLN	DRESS PANEL BLANK; COVERS UNUSED CABINET ROW FOR CAB-5
1	DP-T2A	DRESS PANEL; 10" TOUCHSCREEN DISPLAY AND 2 ANNUNCIATORS FOR CAB-5
1	DR-D5	E SIZE DOOR, LOCK & KEYS FOR CAB-5
1	SBB-D5	CAB-5 STANDARD BACK BOX SIZE D, FOUR ROW
2	XP10-M	XP10 TRANSPONDER MONITOR MODULE, 10 CIRCUITS CLASS A OR B.
4	XP6-MA	XP6 TRANSPONDER 2-WIRE DETECTOR MONITOR MODULE; 6 CIRCUITS CLASS A OR B.
2	ACM-30	INSPIRE SERIES ANNUNCIATOR CONTROL MODULE CONFIGURABLE FOR ACTIVATION AND INDICATION
1	CPU-N16LD	CHASSIS MOUNT N16 INTELLIGENT FIRE ALARM CONTROL PANEL; 10" TOUCHSCREEN DISPLAY, CPU, UNIVERSAL AC INPUT POWER SUPPLY AND ONE SIGNALING LOOP MODULE (318 DEVICES) INCLUDED, EXPANDABLE TO 10. MOUNTS IN CAB-5. THE CPU IS SHIPPED WITH THE ABILITY TO SUPPORT UP TO 3 LOOPS, 1 POWER SUPPLY, 100 GENERAL ZONES, 50 LOGIC ZONES AND UPTO 2 ADDITIONAL NODES WITHOUT NETWORK DISPLAY LICENSE. THE CPU CAN BE UPGRADED TO AN N16X PERSONA THAT SUPPORTS UP TO 10 LOOPS, UP TO 3 POWERSUPPLIES, 250 GZ, 250LZ AND UPTO 2 ADDITIONAL NODES WITHOUT NETWORK DISPLAY LICENSE BY ADDING THE OPTIONAL LICENSE
1	PMB-AUX	AUXILIARY POWER SUPPLY, 6 AMPS, UNIVERSAL AC INPUT, ON CHASSIS FOR CAB-5
9	SLM-318	SIGNALING LOOP MODULE SUPPORTS 318 DEVICES PER LOOP MODULE.
1	N16-XUPG	UPGRADE LICENSE FROM N16E PERSONA PANEL OPERATION TO N16X PERSONA PANEL OPERATION
7	N16-GZN	PANEL LICENSE - ADD 250 GENERAL ZONES FOR N16 PANEL [250 ZONES INCLUDED IN CPU. UP TO 2000 GENERAL ZONES PER CPU]
7	N16-LGZ	PANEL LICENSE - ADD 250 LOGIC ZONES FOR N16 PANEL [250 ZONES INCLUDED IN CPU, UP TO 2000 LOGIC ZONES PER CPU]
1	HS-NCM-W-2	HIGH-SPEED NETWORK COMMUNICATIONS MODULE, TWISTED-PAIR WIRE INTERFACE.

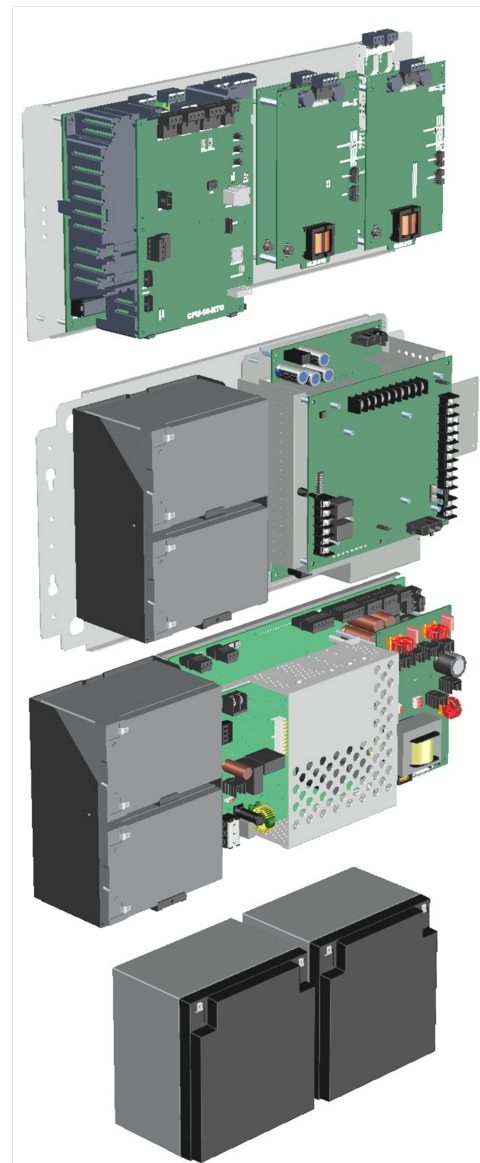
****BATTERY BOX AND SYSTEM BATTERIES ARE NOT INCLUDED AND SHOULD BE SELECTED BASED ON CALCULATIONS**

Sample Configuration #4 — NOTIFIER INSPIRE N16x DGP

EQ Series Enclosure containing No Display FACU With 3 SLC Loops, 500 General Zones, 250 Logic Zones, High-Speed Wire Network, 70V Digital Amplifier with Backup, and 12-Amp Strobe Expander



Exterior



Interior View

Sample Configuration #4 — NOTIFIER INSPIRE N16x DGP BOM

EQ Series Enclosure containing No Display FACU With 3 SLC Loops, 500 General Zones, 250 Logic Zones, High-Speed Wire Network, 70V Digital Amplifier with Backup, and 12-Amp Strobe Expander

QUANTITY	PART NO	DESCRIPTION
1	BDA-70V	BACK-UP DIGITAL AMPLIFIER FOR 70 VOLT DAX OR DAA2 SERIES
1	CHS-BH1	CHASSIS, 12AH BATTERY HOLDER, FOR USE WITH DAA- NUMBERS
1	DAA2-5070	DIGITAL AMPLIFIER 50W, 70V, 120 VAC
1	BAT-12120-BP	FOUR (4) BAT-12120 BAT-12120 (12V, 12AH)
1	BAT-12260-BP	TWO (2) BAT-12660 (12V, 26AH)
1	EQBB-D4	EQUIPMENT BACKBOX ASSEMBLY, FOUR TIERS, BLACK.
1	EQDR-D4	EQUIPMENT DOOR ASSEMBLY, VENTED, FOUR TIERS, BLACK.
1	CPU-16-RTO	CHASSIS MOUNT N16 INTELLIGENT FIRE ALARM CONTROL PANEL; 10" TOUCHSCREEN DISPLAY, CPU, UNIVERSAL AC INPUT POWER SUPPLY AND ONE SIGNALING LOOP MODULE (318 DEVICES) INCLUDED, EXPANDABLE TO 10. MOUNTS IN CAB-4. THE CPU IS SHIPPED WITH THE ABILITY TO SUPPORT UP TO 3 LOOPS, 1 POWER SUPPLY, 100 GENERAL ZONES, 50 LOGIC ZONES AND UPTO 2 ADDITIONAL NODES WITHOUT NETWORK DISPLAY LICENSE. THE CPU CAN BE UPGRADED TO AN N16X PERSONA THAT SUPPORTS UP TO 10 LOOPS, UP TO 3 POWERSUPPLIES, 250 GZ, 250LZ AND UPTO 2 ADDITON-
2	SLM-318	SIGNALING LOOP MODULE SUPPORTS 318 DEVICES PER LOOP MODULE.
1	N16-GZN	PANEL LICENSE - ADD 250 GENERAL ZONES FOR N16 PANEL [250 ZONES INCLUDED IN CPU. UP TO 2000 GENERAL ZONES PER CPU]
1	HS-NCM-W-2	HIGH-SPEED NETWORK COMMUNICATIONS MODULE, TWISTED-PAIR WIRE INTERFACE.
1	HPFF12CM	12A NAC EXPANDER, CAB-4 CHASSIS-MOUNT, INCLUDES BATTERY HOLDER FOR 12AH BATTERIES

****BATTERY BOX AND SYSTEM BATTERIES ARE NOT INCLUDED AND SHOULD BE SELECTED BASED ON CALCULATIONS**