

Overview

The VESDA-E VEA-040-Axx-NTF is based on VESDA-E VEA-040-Axx detector with built-in SLC interface to interface to intelligent fire panels over SLC loop.

This product guide provides deviations from the base detector model (VESDA-E VEA-040-Axx) to be able to connect to the FACP. Hence this product guide must be read in-conjunction with the respective product guide in References section of this document.

This guide introduces SLC specific wiring and specifications. It is assumed that anyone using this product has the knowledge and appropriate certification from local fire and electrical authorities.

NOTE: Reference to the VEA-040-Axx-NTF or VEA-040-Axx apply to all available models of the VESDA-E VEA. Refer to the Ordering Information section below for available models.

Document conventions

Same as VEA-040-Axx product guide (copy and paste from VEA-040-A10)

■ UL and ULC

Codes and standards information for Air sampling smoke detection

We strongly recommend that this document is read in conjunction with the appropriate local codes and standards for smoke detection and electrical connections. This document contains generic product information and some sections may not comply with all local codes and standards. In these cases, the local codes and standards take precedence. The information below was correct at the time of printing and may be out of date, check with your local codes, standards and listings for current restriction.

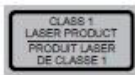
■ FCC Compliance Statement

This equipment has been tested and found to comply with the limits for a Class B digital device, pursuant to part 15 of the FCC Rules. These limits are designated to provide reasonable protection against harmful interference in a residential installation. This equipment generates, uses and can radiate radio frequency energy and, if not installed and used in accordance with the instruction, may cause harmful interference to radio communications. However, there is no guarantee that interference will not occur in a particular installation. If this equipment does cause harmful interference to radio or television reception, the user is encouraged to try to correct the interference by one or more of the following measures: re-orientate or relocate the receiving antenna, increase the separation between the equipment and receiver, connect the equipment to a power outlet which is on a different power circuit to the receiver or consult the dealer or an experienced radio/television technician for help.

■ FDA

The Xtralis product incorporates a laser device and is classified as a Class 1 laser product that complies with FDA regulations 21 CFR 1040.010. The laser is housed in a sealed detector chamber and contains no serviceable parts. The laser emits light which can be hazardous to the eye. Under no circumstances should the detector chamber be opened.

The laser chamber is identified by the labels shown below:



- Special Application: High (1.6%/m [0.5%/ft]) to Standard (8.0%/m [2.5 %/ft])
- Open Area Protection, 0 to 300 ft/min air velocity: High (1.6%/m [0.5%/ft]) to Standard (8.0%/m [2.5%/ft])
- Open Area Protection, 300/1000/2000 ft/min air velocity: High (1.6%/m [0.5%/ft]) to Enhanced (4.0%/m [1.3%/ft])
- Open Area Protection, 3000/4000 ft/min air velocity: High (1.6%/m [0.5%/ft])

Product Listings

- UL
- ULC
- CSFM

References

Document Id	Description
27034	VESDA-E VEA-040-A00 Product Guide
27035	VESDA-E VEA-040-A10 Product Guide

Introduction

The VEA-040-Axx-NTF models have implemented an interface to the FACP over the SLC loop. An interface module mounted to the inside of the VEA door provides the SLC interface for the detector.

The SLC detector does not have VESDAnet capability as the networking is provided by the SLC loop.



CAUTION: DO NOT CONNECT ANY OTHER DEVICE TO THE SPARE VESDANET PORT ON THE VEA-040-Axx-NTF.

Specifications specific to SLC detectors

- Power drawn from the SLC loop: 30mA
- Event reporting is achieved via event logs

NOTE: This model doesn't support the expansion STAX

Ordering Information

VESDA-E VEA-040-Axx Detector capable of interfacing to NOTIFIER panels:

- VEA-040-A00-NTF: NOTIFIER Intelligent VESDA-E VEA-40 point with LEDs
- VEA-040-A10-NTF: NOTIFIER Intelligent VESDA-E VEA-40 point with 3.5" Display

Compatibility with FACP

VEA-040-Axx-NTF is compatible with the following NOTIFIER FACPs:

- NFS2-3030
- NFS2-640
- NFS-320

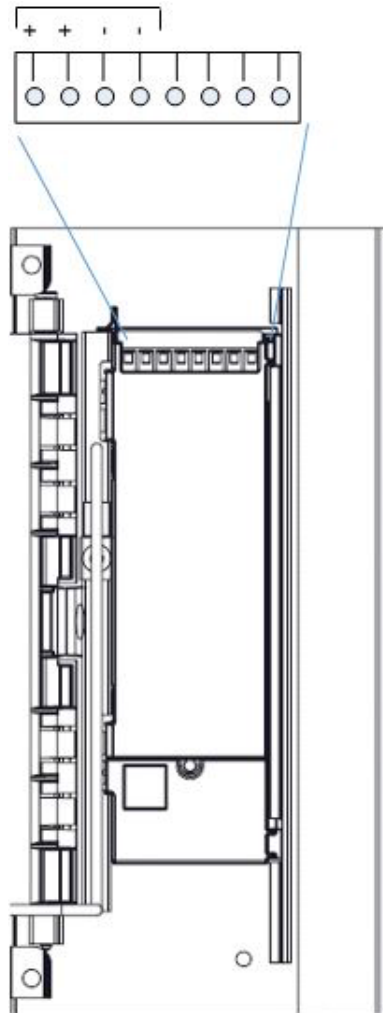
Installation

VEA is an addressable Aspirating Smoke Detector (ASD) with 40 addressable microbore tubes. VEA is configured as an ASD in a 5-address space providing the Alert and Action pre-alarms; and the Fire-1 and Fire-2 alarm conditions. Each of the 40 microbore tube air sampling points are to be configured as a photo detector on the SLC loop. Each VEA will occupy 45 consecutive addresses on the SLC loop.

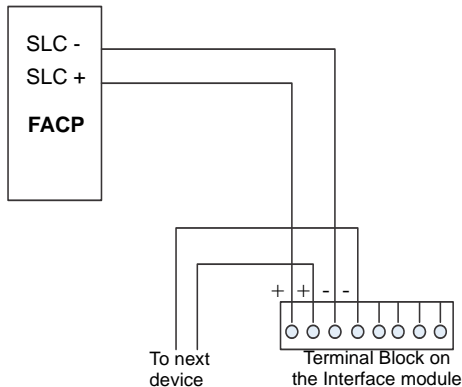
Wiring

The terminal block for SLC wiring will accept wire sizes from 24 AWG – 12 AWG. Route the SLC wiring through the cabling inlets located on the upper and lower sides of the detector base and terminate the wiring on to the respective terminals on the SLC terminal block, as shown in figure below.

SLC Connections



Refer to the diagram below to wire the SLC detector to the FACP.



Communication ports

All of the standard ports of VEA-040-Axx are available except for VESDAnet. VESDAnet is not available to the user in these models of the detectors. However Gateway function is still applicable to this detector model to connect to Xtralis VSC.

Installation checklist

Ensure that the SLC wiring has been completed as part of the installation check list.

Site Name	
Address	
Detector Serial Number and Date of Manufacture	
Name of Installer	
Signature	
Date	

Perform the following checks listed below to ensure that all of the necessary items are completed before handing over to a commissioning engineer.

Installation Checks	Done (Y/N)
The detector is intact in the box	
The detector is securely locked onto the mounting bracket (if in use).	
The sampling air pipes are firmly connected to the air inlet ports. Ensure that the tubes are NOT glued	
The tube network is setup according to the information provided in the respective detector product guide.	
The un-used tube inlet ports are blocked with a blanking plug.	
The power supply wiring has been connected to the detector	
SLC wiring to the FACP has been completed	
The adhesive tape has been removed from the exhaust port. Ensure that the exhaust pipe (if fitted) is NOT glued.	
The protective film has been removed from the display	
The sampling pipework has been installed and checked as per the site plans	
If required, the end of line resistor for the monitored GPI has been connected. Refer to the respective base detector product guide for additional information	

Functions that are specific to VEA-040-Axx-NTF

- The RESET/DISABLE Button has no function associated with it.
- The seven (7) relays available are pre-configured with default settings and can not be changed on the SLC enabled detectors. For default configuration and wiring information, refer to the associated VEA-040-Axx product guide.
- Unmonitored and Monitored General Purpose Input (GPI) are available in the VEA-040-Axx-NTF, which are only assigned the Remote Reset function and are not user configurable.
- When in Pre-alarm condition, a reset is required to enable scanning to indicate which tube is reporting the condition. A GPI can be used to initiate this scan on the VEA.
- When under a flow fault condition, a reset is required to enable scanning to indicate which tube is reporting the condition. A GPI can be used to initiate this scan on the VEA.
- The Autolearn flow function is not available.

Power

The Aspiration device requires 24V DC. The SLC interface is powered from the SLC loop. SLC wiring must be completed to fully power and configure the detector.

Supply voltage	18-30 VDC (24 V Nominal)	
Device current consumption @ 24 VDC	VEA-040-A00-NTF	VEA-040-A10-NTF
Normal operation	1.12A	1.12A
In alarm	1.12A	1.12A
Peak current (scan mode)	3.5A	3.5A
SLC power consumption		
Normal operation	8mA	8mA
In alarm	30mA	30mA

Table 1.1 VEA Power Consumption

Configuration

To fully configure the SLC interfaced detector, both the Xtralis VSC software and an FACP connection (via the SLC interface) are required. Ensure that the SLC wiring has been completed on the detector.

A PC loaded with Xtralis VSC software is directly connected to the detector using the USB port for initial configuration of the detector.

FACP Programing

For FACP programing use the FlashScan ID FFASTX and Type Code ASPIRATION or ASPIR (SUP). Do not use ASPIR (PRE), ASPIR (NON) and ASPIR (REF).

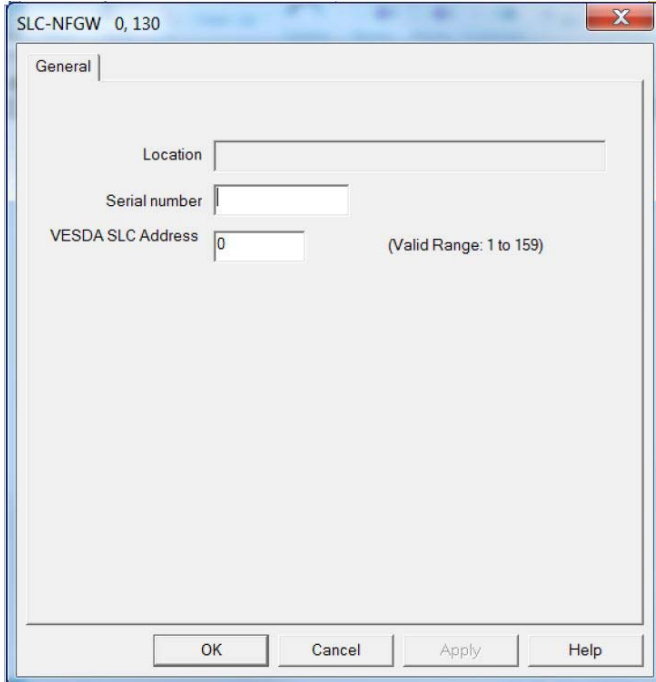
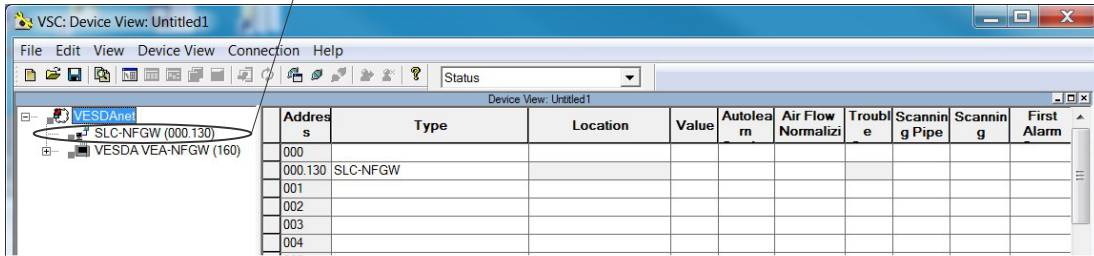
For the 40 addressable tubes, use the FlashScan ID PHOTO and Type Code Smoke (Photo)

SLC Address Assignment

The SLC addressing for the SLC enabled VEA-040-Axx-NTF is set using the VSC software. Refer to the graphics below.

NOTE: Each SLC enabled VEA-040-Axx unit consumes forty-five (45) SLC addresses. (5 for ASD, 40 for the tubes).

Select the SLC-NFGW (000.130) line of the device tree in the VSC software to display the SLC-NFGW option screen.



Notes:

- Each SLC enabled VEA-A10 unit occupies 45 consecutive addresses on the SLC.
 - Valid SLC address for the VEA-A10: 1 to a maximum of 115
 - Each SLC loop can support a maximum of 3 SLC enabled VEA-040-Axx devices.

Addressing Examples:

VESDA SLC Address: 01

VEA occupies SLC addresses 01 through 45

VESDA SLC Address: 115

VEA occupies SLC addresses 115 through 159

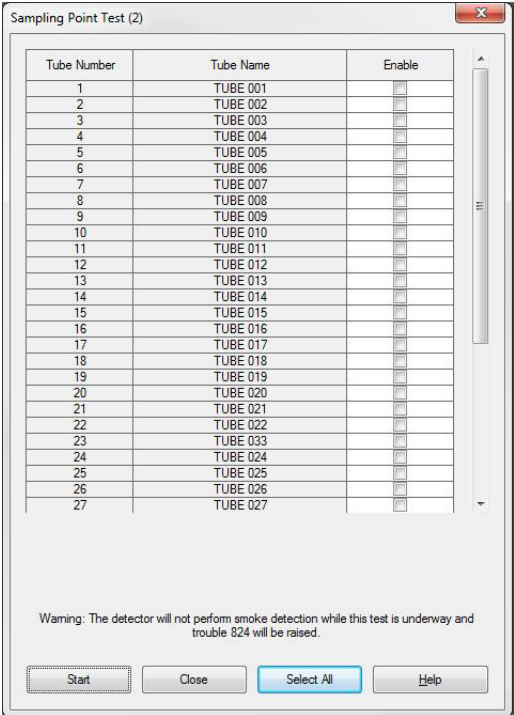
Configuration Commands

Refer to VEA-040-Axx product guide for configuration steps on the detector side.

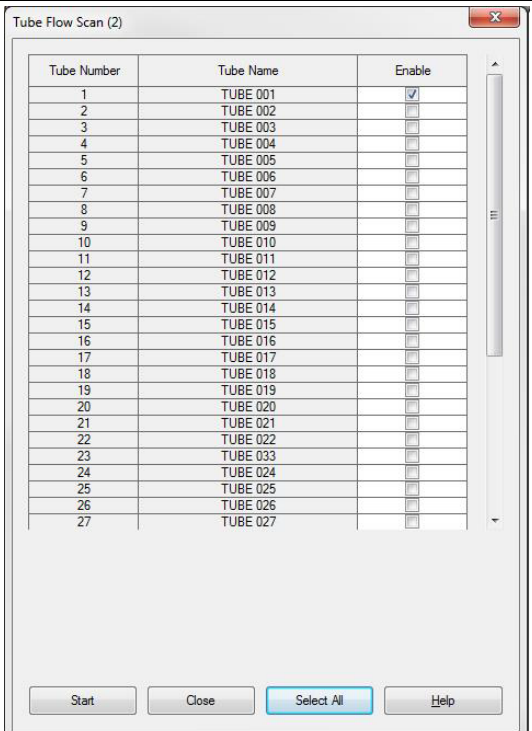
Not all configuration commands defined in VEA-040-Axx product guide can be issued using VSC in an SLC interfaced detectors. The following are the commands that are able to be issued to the SLC capable detector using VSC.

Command	Description
Reset	The Reset command resets the alarm generation logic and clears the active event list. Reset does not enable a disabled detector. To assist in determining the location of a fire, when the system is reset and if the system is in Pre-Alarm, the detector will initiate a smoke scan of all sampling locations. When the system is reset and there is no alarm condition, but there are one or more flow faults, the detector will perform a flow scan to ensure that there are no remaining flow fault conditions. Flow scan progress can be observed using the detailed status screen of Xtralis VSC and, if required, the flow scan can be canceled using Xtralis VSC.
Start Normalize Air Flow	Starts the air flow normalization process for the selected detector. The normalization process determines the reference flow rate. Normalization should be performed after changing pipe or monitoring pump settings. The process takes approximately 30 minutes. The detector must have been powered up for 5 minutes before the Normalization process can be initiated. The detector can be in normal or disabled mode. The pump remains on throughout the normalization process and no fault is reported unless the process fails to successfully complete. The normalizing status may be observed on the "detailed status" tab in the Xtralis VSC software. To normalize the detector using the internal AutoConfig button, press and hold the button until the AutoConfig LED illuminates, then release the button. To cancel the normalization process, press and hold the button for 5 seconds. The LED will turn off.
Stop Flow Scan	End an in-progress flow scan test.

Start Local Smoke Test	<p>Perform a local smoke test to confirm correct operation of detector internal components. The test is manually initiated from within the Xtralis VSC software. The detector will not perform normal smoke detection from the sampling tubes while this test is in progress, and Fault 826 is generated.</p> <p>To test: Spray smoke into test ports with red plugs, located on the left side of the detector, and initiate the Start Local Smoke Test command. To open the smoke test ports, push the black release button around the red plug with a screwdriver while pulling the plug out. Ensure that the plugs are replaced when testing is complete.</p> <p>While the Local Smoke Test is running: the Scanning State indicator on the Detail Status tab will show that the test is being performed. The Tube Start / End indicator on the Detail Status tab will show "Home".</p> <p>To complete testing: Execute the Stop Local Smoke Test command to complete the test.</p>
Stop Local Smoke Test	End an in-progress local smoke test. Fault 826 will cleared.
Start Leak Test	<p>Test for air leaks within the detector.</p> <ul style="list-style-type: none"> • Test is performed automatically every 24 hours at a specified time • Can be manually initiated from within the Xtralis VSC software. • Generates Fault 829 if leaks are detected.
Stop Leak Test	End an in-progress leak test.
Sampling Point Test	<p>Test for the correct presence of a sampling point at the end of the tube.</p> <ul style="list-style-type: none"> • The test is performed automatically every 24 hours at a specified time • Can be manually initiated from within the Xtralis VSC software. • Fault 824 will be generated if no Sampling Point is fitted or the tube is fractured. If the Sampling Point is present, no fault will be generated. <p>While the Sampling Point Test is running:</p> <ul style="list-style-type: none"> – The Scanning State indicator on the Detail Status tab will show that the test is being performed. <p>Procedure:</p> <ol style="list-style-type: none"> 1. Initiate the Sampling Point Test command from the Device menu. 2. Select the tubes to be tested by editing the check boxes in the Enable column. (See example to the right.) 3. Select Start. 4. End the test early by selecting Stop.



<p>Sampling Point Cleaning</p>	<p>Clean the sampling points.</p> <ul style="list-style-type: none"> The operation is performed automatically at specified intervals Can be manually initiated from within the Xtralis VSC software. <p>While the Sampling Point Cleaning function is running:</p> <ul style="list-style-type: none"> Fault 825 is generated. The Scanning State indicator on the Detail Status tab will show that the operation is being performed. The Tube Start / End indicator on the Detail Status tab will show which tubes are being cleaned. The Percentage completed indicator on the Detail Status tab will show progress of the operation. <p>Procedure</p> <ol style="list-style-type: none"> Initiate the Sampling Point Cleaning command from the Device menu. Select the tubes to be cleared by editing the check boxes in the Enable column. Select Start. End the procedure early by selecting Stop. 	
<p>Start Alarm Test</p>	<p>Simulate full scale smoke level and initiates all alarm activity.</p> <ul style="list-style-type: none"> Alarm relays will energize unless the detector is disabled. <p>Procedure</p> <ol style="list-style-type: none"> Initiate the Start Alarm Test command from the Device menu. Select the tubes to be tested by editing the check boxes in the Enable column. Set the test duration (default 30 seconds). Select Start. End the test early by selecting Stop. 	
<p>Start Air Flow Fault Test</p>	<p>Tests the air flow sensing system by shutting down the aspirator.</p>	
<p>Return to Factory Defaults</p>	<p>Restores the configuration of the detector to the initial factory default values. This setting will overwrite the SLC defaults. For SLC operation, the "Set SLC defaults" command needs to be performed following this command.</p>	
<p>Set SLC defaults</p>	<p>Sets the SLC Mode to their defaults settings.</p>	
<p>Set System Date and Time</p>	<p>Sets the detector date and time</p>	
<p>SLC Address</p>	<p>Sets the SLC loop address for the detector. Range is 1 to 159. Default is 0. Refer to SLC Address Assignment section above.</p>	
<p>Walk Test</p>	<p>Refer to the Walk Test Command section in the relevant VEA Product Guide.</p>	

<p>Tube Flow Scan</p> <p>The Tube Flow Scan function allows the user to measure the air flow rate for a selected set of tubes.</p> <ul style="list-style-type: none"> – The Flow rate can be viewed in the event log. <p>Procedure:</p> <ol style="list-style-type: none"> 1. Select Tube Flow Scan from the Device Menu. 2. Select the tubes for which the flow scan is to be performed. 3. Select Start. “Testing In Progress” will be displayed. The detector will move the rotary valve to each tube and measure the flow rate. 4. To stop the flow scan select “Stop”. The event log will have an event showing the flow rate for each selected tube. 	
--	--

Configuration Options

All of the configuration options described in VEA-040-Axx product guide are available with the following deviations

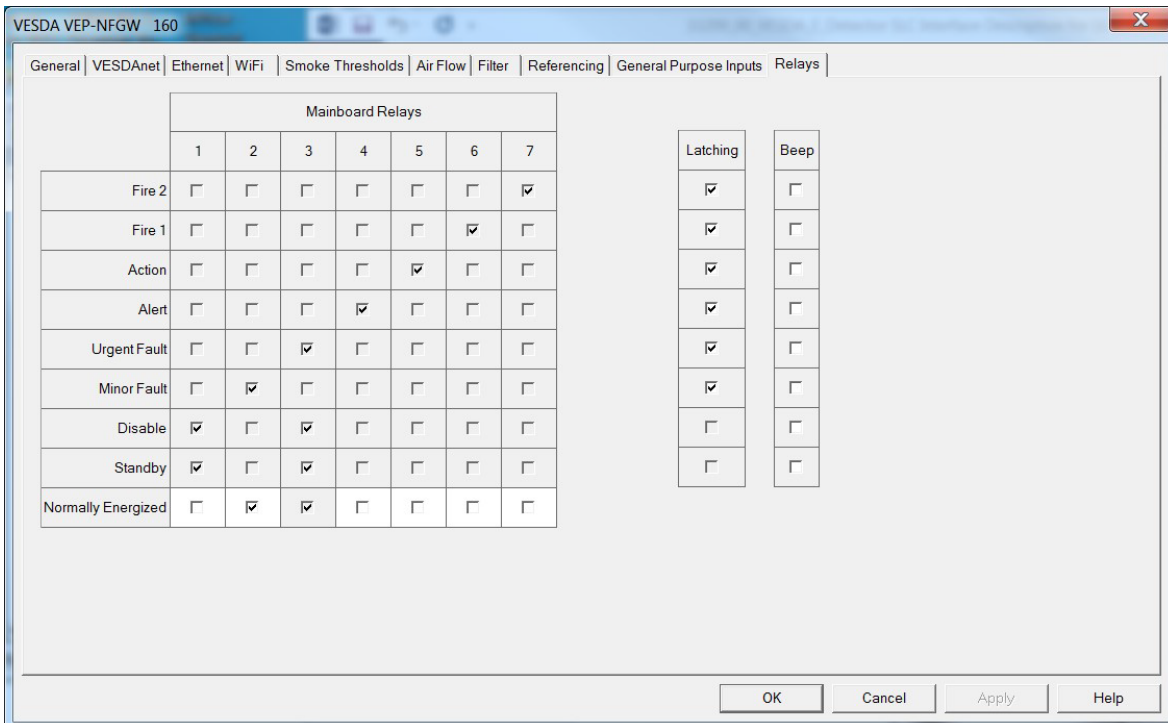
- VESDAnet options are not applicable as VESDAnet is not user accessible for the SLC enabled detectors.
- Module options are not applicable to SLC enabled VEA detectors as it doesn't support Expansion StaX and Local Relay StaX.
- Flow thresholds (Fault Sensitivity) and Flow Fault delay parameters can only be set by the fire panel. These settings are not available in the VSC software.

Refer to respective panel guide to set the air flow parameters. The remaining flow parameters defined in VEA-040-Axx product guide can be set using the VSC software. Follow the VEA-040-Axx product guide for information on setting up the remaining parameters.

GPIs and Relays

General purpose inputs are not available to be configured via VSC.

Relay options are not available to be configured via VSC. The following screen shot shows relay assignments for the SLC instance.



	Mainboard Relays							Latching	Beep
	1	2	3	4	5	6	7		
Fire 2	<input type="checkbox"/>	<input type="checkbox"/>	<input type="checkbox"/>	<input type="checkbox"/>	<input type="checkbox"/>	<input type="checkbox"/>	<input checked="" type="checkbox"/>	<input checked="" type="checkbox"/>	<input type="checkbox"/>
Fire 1	<input type="checkbox"/>	<input type="checkbox"/>	<input type="checkbox"/>	<input type="checkbox"/>	<input type="checkbox"/>	<input checked="" type="checkbox"/>	<input type="checkbox"/>	<input checked="" type="checkbox"/>	<input type="checkbox"/>
Action	<input type="checkbox"/>	<input type="checkbox"/>	<input type="checkbox"/>	<input type="checkbox"/>	<input checked="" type="checkbox"/>	<input type="checkbox"/>	<input type="checkbox"/>	<input checked="" type="checkbox"/>	<input type="checkbox"/>
Alert	<input type="checkbox"/>	<input type="checkbox"/>	<input type="checkbox"/>	<input checked="" type="checkbox"/>	<input type="checkbox"/>	<input type="checkbox"/>	<input type="checkbox"/>	<input checked="" type="checkbox"/>	<input type="checkbox"/>
Urgent Fault	<input type="checkbox"/>	<input type="checkbox"/>	<input checked="" type="checkbox"/>	<input type="checkbox"/>	<input type="checkbox"/>	<input type="checkbox"/>	<input type="checkbox"/>	<input checked="" type="checkbox"/>	<input type="checkbox"/>
Minor Fault	<input type="checkbox"/>	<input checked="" type="checkbox"/>	<input type="checkbox"/>	<input type="checkbox"/>	<input type="checkbox"/>	<input type="checkbox"/>	<input type="checkbox"/>	<input checked="" type="checkbox"/>	<input type="checkbox"/>
Disable	<input checked="" type="checkbox"/>	<input type="checkbox"/>	<input checked="" type="checkbox"/>	<input type="checkbox"/>	<input type="checkbox"/>	<input type="checkbox"/>	<input type="checkbox"/>	<input type="checkbox"/>	<input type="checkbox"/>
Standby	<input checked="" type="checkbox"/>	<input type="checkbox"/>	<input checked="" type="checkbox"/>	<input type="checkbox"/>	<input type="checkbox"/>	<input type="checkbox"/>	<input type="checkbox"/>	<input type="checkbox"/>	<input type="checkbox"/>
Normally Energized	<input type="checkbox"/>	<input checked="" type="checkbox"/>	<input checked="" type="checkbox"/>	<input type="checkbox"/>	<input type="checkbox"/>	<input type="checkbox"/>	<input type="checkbox"/>	<input type="checkbox"/>	<input type="checkbox"/>

Button Lockout Options

Button Lockout Options is also not available for the SLC capable VEA. The front panel button does not have any function associated with it.

Commissioning

Once the detector is configured appropriately, ensure that the detector could communicate with the FACP without any faults. Refer to respective FACP product guides for configuring the detector over the SLC loop.

Disconnect power to the VEA-040-Axx and verify that communication fault is triggered at the FACP.

Once the above is verified, follow the commissioning process described in VEA-040-Axx product guide.

Make copies of the completed commissioning forms and attachments and forward these to:

- Appropriate NOTIFIER sales office
- Installing contractor
- Designer of the system
- End user of the system

Troubleshooting

Faults are reported to FACP via SLC interface in SLC enabled detectors. All of the detector faults are mapped to the following categories at the FACP. Use the Xtralis VSC software to further investigate the following faults:

- Sensor fault
- Aspirator fault
- Communication fault
- Configuration fault
- Low flow fault
- High flow fault
- Filter fault – clogged
- Low voltage fault

Refer to the troubleshooting section of VEA-040-Axx product guide for additional fault information.

Commissioning Forms

Customer Name	
Site Address	
Installer (Name & Contact)	
Commissioner (Name & Contact)	

Commissioning Checks	Done (Y/N)	Notes
SLC wiring checks		
Correct maximum tube length configured		
Periodic airflow testing configured		
Filter service interval days configured		
Filter replacement due date:		
Tube names and correct group factors configured		
GPI connected and tested (if used)		
SLC address set correctly		
SLC detector setup on the SLC loop with no errors at the FACP		
Communication fault reported to the FACP when the detector power was removed.		
Detector normalized and running without faults		
Sampling points tested using Xtralis VSC Sampling		
Smoke test done		
Smoke type used:		
Transport time (TT) tests done		
Detector longest even and odd pipes TT		
Walk test done and report generated and printed		

Handover: Commissioning engineer, commissioner / AHJ and customer representative should be satisfied on all aspects of commissioning and agree that the commissioning has met the required codes and standards. The detector must be ready for day to day operation prior to hand over. To hand over the system to the client obtain the relevant signatures and ensure that all required documents are included.

Hand Over Documents	
Copy of this form	
Configuration printout or record	
(if done) Specific performance test report	
Forms required for compliance with local codes and standards	
Customer's Signature	Date:
Commissioner's Signature	Date:

VEA-040-Axx Detector Configuration Record

Use the Xtralis VSC application to print a record of the detector's configuration. Select the detector on the Xtralis VSC tree view at the left and choose the Print command on the File menu.